



COMBINATION NIPPLES

GROOVED - STEEL & SS 316

FEATURES & APPLICATIONS:

- Low pressure fluid transfer, suction and discharge. Working pressures may vary with hose type and clamping system used to install couplings.

- Combination Nipples are recommended for low pressure discharge and suction service for compatible liquids. NOT for compressible products such as Air, Nitrogen and Steam.

*All blank end & grooved combination nipples are made using Schedule 40 pipe



STEEL - GROOVED



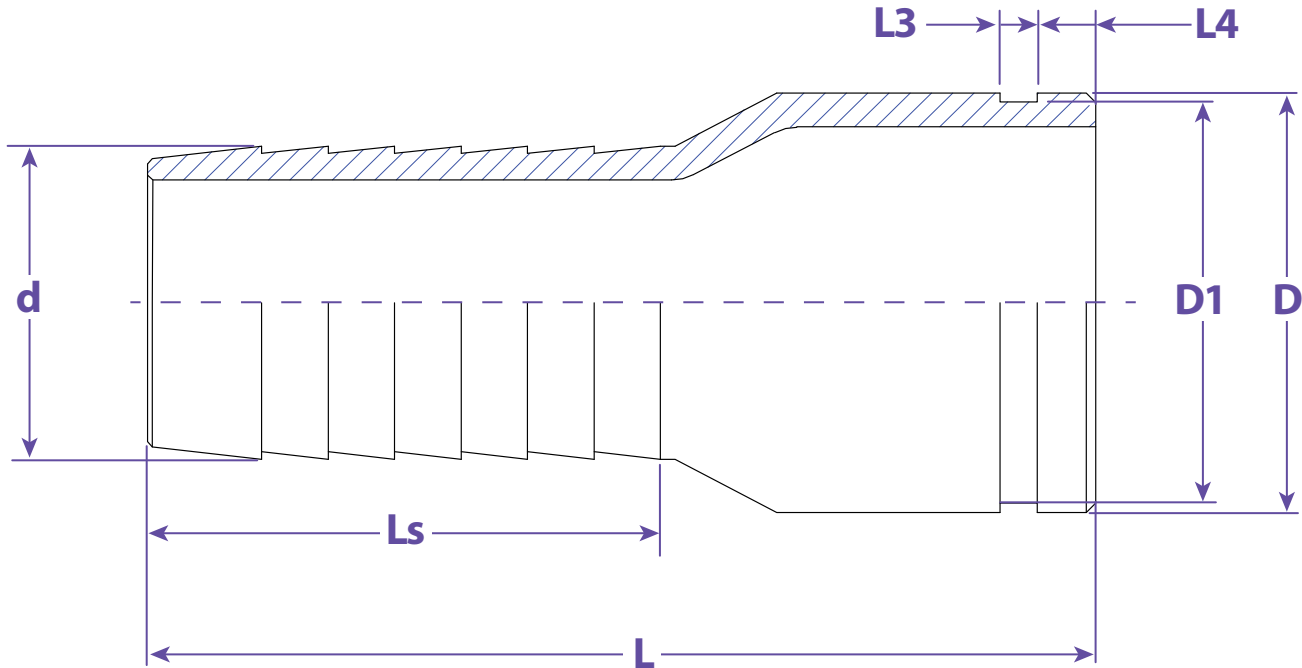
316 SS - GROOVED

STEEL & STAINLESS 316

| SIZE | STEEL GROOVED | 316SS # GROOVED |
|--------|---------------|-----------------|
| 1/2" | --- | --- |
| 3/4" | SF075SG | --- |
| 1" | SF100SG | SF100SSG6 |
| 1-1/4" | SF125SG | SF125SSG6 |
| 1-1/2" | SF150SG | SF150SSG6 |
| 2" | SF200SG | SF200SSG6 |
| 2-1/2" | SF250SG | SF250SSG6 |
| 3" | SF300SG | SF300SSG6 |
| 4" | SF400SG | SF400SSG6 |
| 5" | SF500SG | --- |
| 6" | SF600SG | --- |
| 8" | SF800SG | --- |
| 10" | SF1000SG | --- |



Information contained on this page is for general information purposes only. Seal Fast Inc. assumes no responsibility for errors or omissions for this product.



Dimensions

| L | Ls | L3 | L4 | D | D1 | d | Part # |
|---------|--------|--------|--------|---------|---------|---------|-----------|
| 3.1024 | 1.5748 | 0.3150 | 0.6299 | 1.0709 | 0.9449 | 0.7795 | SF050xxx |
| 3.3071 | 1.6142 | 0.3150 | 0.6299 | 1.3386 | 1.2205 | 1.0354 | SF075xxx |
| 3.9291 | 1.8504 | 0.3150 | 0.6299 | 1.6811 | 1.5748 | 1.2992 | SF100xxx |
| 4.1063 | 2.1260 | 0.3150 | 0.6299 | 1.9134 | 1.7717 | 1.5354 | SF125xxx |
| 4.7165 | 2.4803 | 0.3150 | 0.6299 | 2.3937 | 2.2441 | 2.0315 | SF150xxx |
| 5.5236 | 2.8937 | 0.3150 | 0.6299 | 2.8740 | 2.7165 | 2.5315 | SF200xxx |
| 6.0866 | 3.3858 | 0.3150 | 0.6299 | 3.5000 | 3.3465 | 3.0315 | SF250xxx |
| 7.1850 | 3.8583 | 0.3740 | 0.6299 | 4.5000 | 4.3307 | 4.0315 | SF300xxx |
| 8.8504 | 5.4331 | 0.3740 | 0.6299 | 5.5630 | 5.3937 | 5.0315 | SF400xxx |
| 10.9134 | 6.4567 | 0.3740 | 0.7480 | 6.6260 | 6.4567 | 6.0472 | SF500xxx |
| 12.1260 | 7.6378 | 0.4331 | 0.7480 | 8.6260 | 8.4646 | 8.0472 | SF600xxx |
| 13.1102 | 7.6772 | 0.4331 | 0.7480 | 10.7480 | 10.5906 | 10.0787 | SF800xxx |
| 14.5276 | 9.2520 | 0.4331 | 0.7480 | 12.7165 | 12.5197 | 12.0866 | SF1000xxx |

TITLE COMBINATION NIPPLES - GROOVED

DISCLAIMER

All drawings and specifications are subject to change without notice. Drawings represent general dimensions of our products. Seal Fast cannot guarantee the dimensions of the part will exactly match those in the drawing. This drawing is the property of Seal Fast Inc. Copying or reproduction of this drawing is expressly prohibited.

MATERIAL

SFxxxG Carbon Steel Tube
SFxxxSSG6 Stainless Steel Tube 316

DRAWING NOT TO SCALE

PART # SF...G, SSG6

